



Mayer Industries Inc.



Our Know-How and Inventive Talent based on a long term tradition

P.O. Drawer 1466
Orangeburg, SC 29116-1466 U.S.A.
Phone: 803-536-3500 Fax: 803-536-2545



Company Profile

- Mid size company
- App. 80 employees
- International special machine manufacturer
- Competence in
single and serial manufacturing,
subassembly manufacturing, devices and
special machines
- Maintenance and service

We are located in Orangeburg, South Carolina, at the intersection of Interstate I-26 and US Highway 601 at Exit 145A

Quality System conforms to ISO 9001:2000.

Special Know How:

Sub-suppliers from Europe and Asia

Manufacturing of large size turning parts up to 3800 mm: Turning, Drilling, Milling, Grinding

Manufacturing of small and medium parts: Turning, Drilling, Milling, Grinding

Manufacturing of special materials (z. B. perunal, ductile grafit iron, aluminium bronze, ...)

Assembly of machines, systems, sub-assemblies

System supplier competence





Mayer
Industries Inc.

ADVANTAGES

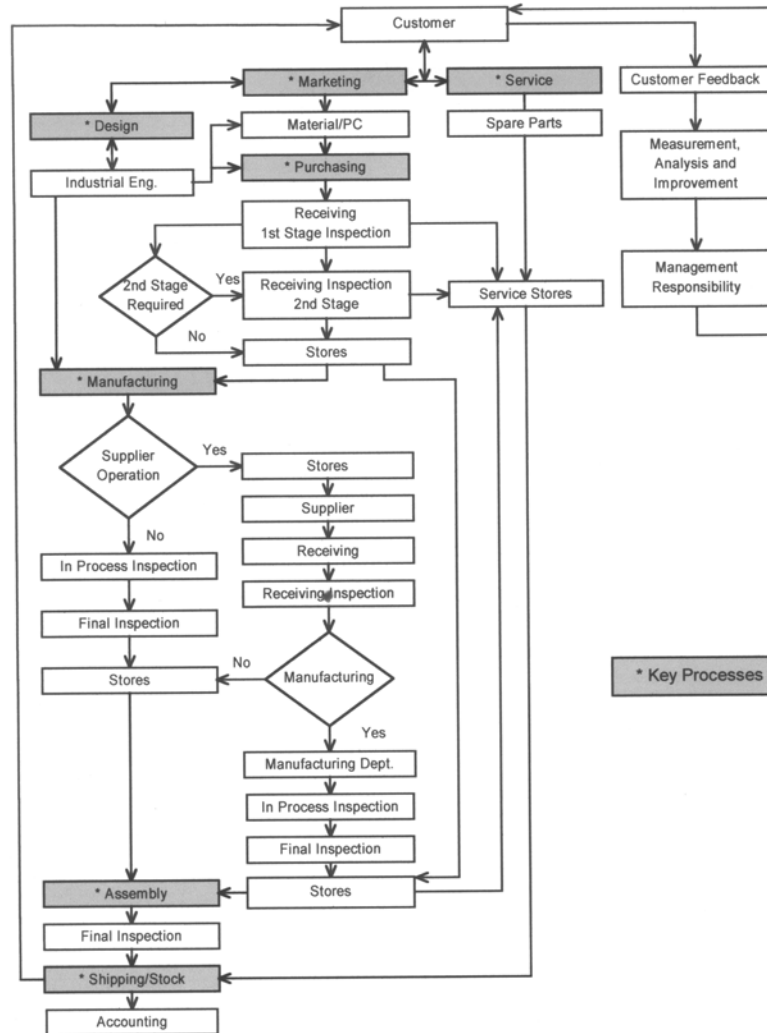


Our advantages:

- Close Turning, Milling, and Drilling tolerances with Precision Grinding as low as two Microns
- Experience in manufacturing and assembly of complex machines and systems since 1971
- State of the art manufacturing equipment and organization
- Convenient to Ports of Charleston, SC and Savannah, GA
- Located within minutes of Interstates I-26 and I-95
- Specialize in short run set-ups and production
- Electrical Control Engineering and Assembly
- Extensive import and export experience
- Manufacturing Area of 130,000 SQ. FT.
- State of the art Cad/Cam systems
- Mayer operates on DIN Standards



PROCESS OVERVIEW



TURNING MACHINES



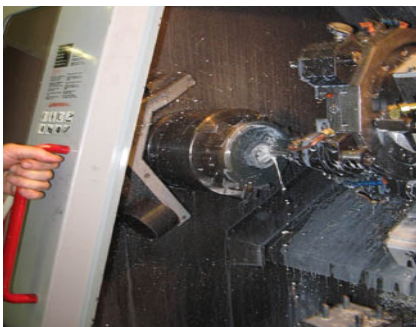
HAAS SL-30

DIA 6", LENGTH 17"
(152MM) (431MM)



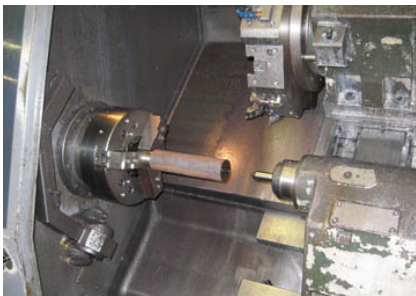
MORI SIEKI CL-203

DIA 7.79" LENGTH 22"
(197MM) (558MM)



MORI SIEKI SL-25

DIA 9", LENGTH 24.6"
(228MM) (624MM)



MONARCH VTN – 10

DIA 39", SWING 53", HT 30"
(990MM) (1346MM) (762MM)



RAW CASTINGS
READY FOR TURNING

FINISHED CASTING
AFTER TURNING



LARGE MILLING AND TURNING MACHINE



**26 TON
CAPACITY**



Pietro Carnaghi: turning and milling in one set-up, live tooling, milling, drilling, boring, tapping!



**Z
HEIGHT
1.2M
46"**

**Turning Dia.
3.8 METERS OR 12.5 FEET**



**X travel
8.5 METERS OR 27.8 FEET**



CNC MILLING

LEBLOND MAKINO A55

HORIZONTAL 4 AXIS, X22" Y22" Z22"

LEBLOND MAKINO 74

VERTICAL 4 AXIS, X27" Y17" Z17"

LEBLOND MAKINO 86

VERTICAL 3 AXIS, X33" Y23" Z22"

MORI SEIKI MV55

VERTICAL 4 AXIS, X41" Y21" Z22"

KINGSBURY HILLYER

VERTICAL 4 AXIS, X60" Y48" Z35"

HAAS VF3

X40" Y20" Z25"

HAAS VF4

X50" Y20" Z25"

HAAS VF6 – 5 AXIS

X64" Y32" Z30"



CNC GRINDING

STUDER, S33

ID – OD GRINDER 39" X 7"
(990 MM)(177MM)

KELLENBERGER

ID – OD GRINDER 59" X 8.8"
(1498MM)(223MM)

MAEGERLE MFP-125

CREEPFEEED SURFACE & PROFILE

OKAMOTO

SURFACE GRINDER 12" X 24"
(304MM)(609MM)

ECO-TECH

SURFACE GRINDING

TSCHUDIN

OD GRINDER, 13.4" X 4"
(340MM)(101MM)

BLANCHARD

ROTARTY GRINDER, 72"
(1828 MM)

VOUMARD

ID GRINDER, 0.2 – 4.72"
(5MM)(119MM)



OTHER EQUIPMENT



KEARNEY & TRECKER

HORIZONTAL MILL, 27" X 22"

CINCINNATI

HORIZONTAL MILL, 42" X 30"

WOTAN

HORIZONTAL BORING MILL, 31" X 31"

WEIPERT

ENGINE LATHE, 23" X 39"

SCHIESS

VTL, DIA. 78"

WOLTERS 3R90

LAPPING, 16"

RAUSCH

BROACHING AND KEYWAY, 11' X 39"

HANSFORD

BROACHING AND KEYWAY, 1/16 X 1 1/2"

HIGH ENERGY MASS SURFACE FINISHING MACHINE

VIBRATORY FINISHING BOWLS

WET-BLAST FINISHING MACHINE

VACUUM HEAT-TREAT FURNACE WITH OIL QUENCH

HEAT-TREAT AND TEMPERING OVENS

INDUCTION HEAT-TREAT, PROGRAMMABLE, 42"

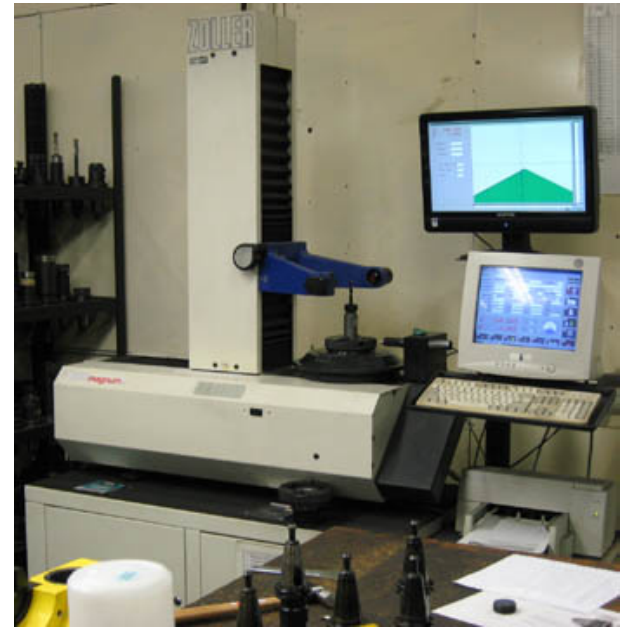
LASER ETCHING MACHINE



TOOL GRINDING AND TOOL CRIB



WALTER
TOOL MAKER AND
SHARPENER



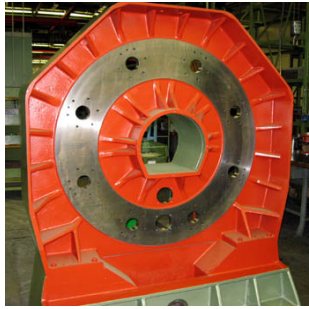
TOOL PRESETTER



ALL TOOLING IS KEPT
IN STOCK

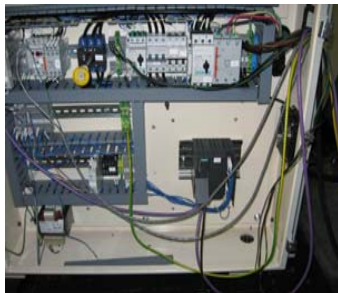


ASSEMBLY

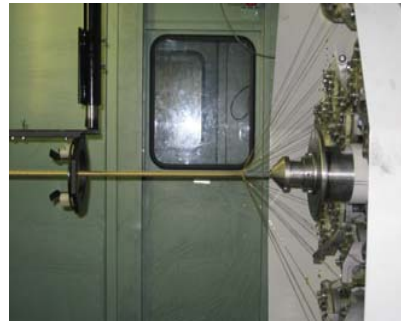
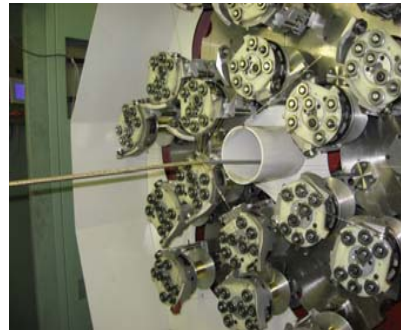


PLAIN DECK READY FOR ASSEMBLY

DECK BEING ASSEMBLED WITH ROTOR FRAMES



ELECTRICAL AND CARRIER ASSEMBLY



TESTING OF BRAIDER MACHINE



QUALITY CONTROL



1300mm X 2000mm X 1000mm

MITUTOYO BHN-1320



700mm X 1000mm X 600mm

MITUTOYO BHN-710



MITUTOYO CMM'S
ROCKWELL HARDNESS TESTERS
ILLITRON GEAR MEASURING MACHINES
STARRETT OPTICAL COMPARATOR
PDA- 400 SURFOMETER



300mm capacity

Helio-Com Supra Calibration Machine

At Mayer over 98% of our gages are calibrated in our Calibration Lab



Contact

Visit us at www.mayerind.com

Your partner at Mayer Industries Inc.:

Contact: Danny Canady
www.dannyc@mayerind.com
803-536-3500 ext.159



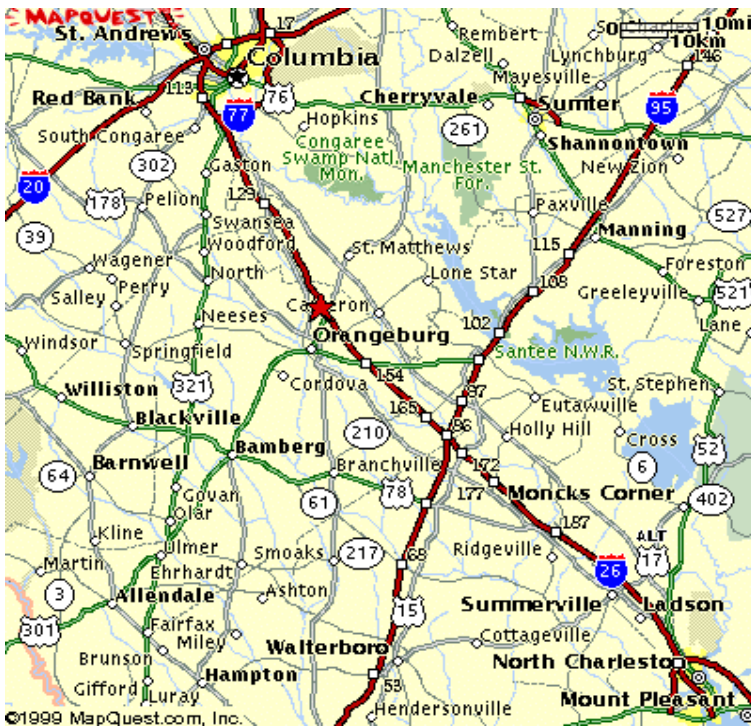
Address:

Mayer Industries Inc.
3777 Industrial Blvd.
Orangeburg, SC 29118 U.S.A.
Phone: 803-536-3500 Fax: 803-536-2545
Internet: <http://www.mayerind.com/loc.html>



Location

How to find us:



Mayer Industries is conveniently located right at the intersection of Interstate I-26 and US Highway 601 at exit 145A. From Interstate I-95 North or South, take exit #87 to Interstate I-26 West toward Columbia. Proceed west on Interstate I-26 for approximately 25 miles, taking the US Highway 601 exit (exit 145A) toward Orangeburg.

Follow exit 145A to the first red light (State service road 38) and take a right. Go approximately 1/2 mile to Industrial Blvd. on the right, following down 1/2 mile to Mayer Industries on the left hand side.

